

AA-BB  
A-B (-A)

# Ruiskukkien valssi

hanuri

Em Am H<sup>7</sup> Em Am

13 D<sup>7</sup> G H<sup>7</sup> Em Am Em

25 Am H<sup>7</sup> Em Em Am

36 D<sup>7</sup> G Em

42 Am H<sup>7</sup> Em

AA-BB  
A-B (-A)

# Ruiskukkien valssi

mandoliini

Em Em Am Am H7 H7 Em Em Em Em Am

12 Am D7 D7 G H7 Em Em Am Am Am Am

23 Em Em Em Em Am Am H7 H7 Em Em Em

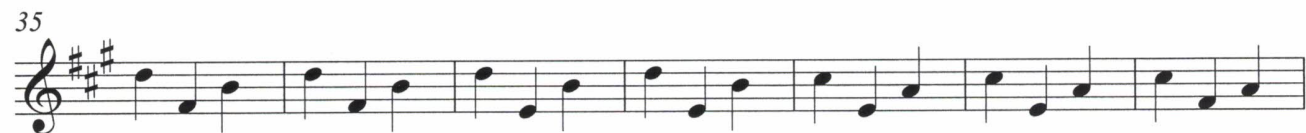
34 Em Am Am D7 D7 G G

41 Em Em Am Am H7 H7 Em Em

AA-BB  
A-B (-A)  
Clarinet in B $\flat$

# Ruiskukkien valssi

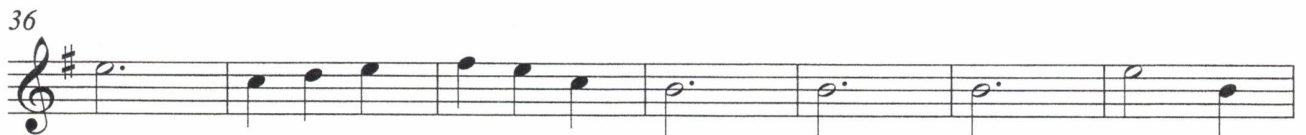
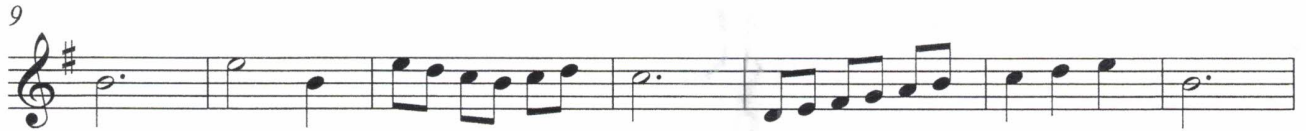
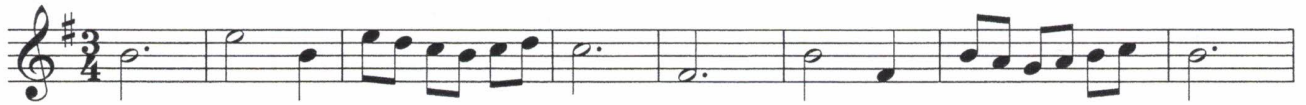
Säv. Sulo Masalin  
sov. Osmo Nieminen



Flute AA-BB  
A-B (-A)

# Ruiskukkien valssi

Säv. Sulo Masalin  
sov. Osmo Nieminen



VIOLIN

AA-BB  
A-B (-A)

# Ruiskukkien valssi

Sulo Masalin  
sov. Osmo Nieminen

1-11

Em Am H7 Em Em Am

Musical notation for measures 1-11, including treble and bass staves with notes and chords.

12-22

D7 G H7 Em Am Am

Musical notation for measures 12-22, including treble and bass staves with notes and chords.

23-32

Em Em Am H7 Em

Musical notation for measures 23-32, including treble and bass staves with notes and chords.

33-40

Em Am D7 G

Musical notation for measures 33-40, including treble and bass staves with notes and chords.

41-48

Em Am H7 Em

Musical notation for measures 41-48, including treble and bass staves with notes and chords.

AA-BB  
A-B (-A)

Bassot ja  
Harmoonit

Bass guitar sheet music in 4/4 time, featuring chords and a double bar line. The chords are: Em, Am, H7, Em, Am, D7, D7, G, H7, Em, Am, Em, Am, D7, D7, G, Em, Am, H7, H7, Em.

Handwritten note: *Fin*